



# PRESSURE

## REFRIGERATION GAUGE 25W100

### DESCRIPTION

The **Ashcroft Model 25W100 Refrigeration Gauges** are ideal for installation on refrigeration manifolds for testing air conditioning units. The compound scale is designed specifically for R134A refrigerant testing. FlutterGuard™, a standard feature of these gauges, eliminates pointer flutter.



**ASHCROFT**

25W100

### SPECIFICATIONS

<b>Dial Size</b>	2 1/2" (6.4 cm)
<b>Accuracy</b>	1%-2%-5%
<b>Measurement Range</b>	30" Hg vac to 120 psi (retard to 250 psi)
<b>Wetted Parts</b>	Brass socket, phosphor bronze bourdon tube
<b>Process Connection</b>	1/8" NPT, lower
<b>Enclosure</b>	Window: Polycarbonate
<b>Case</b>	ABS plastic
<b>Warranty</b>	1 year

### ORDERING INFORMATION

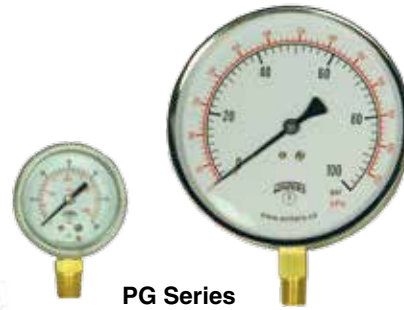
MODEL	DESCRIPTION
25W1007PH01L-R134A	Refrigeration gauge for R134A

## PRESSURE GAUGES

### PG SERIES

### DESCRIPTION

The **PG Series Pressure Gauges** are durable, cost-effective, general-purpose gauges for use in a wide variety of HVAC controls applications. All gauges are compatible with air, oil, and water and have a bronze bourdon tube, acrylic lens, and dual unit psi/kPa scale. The **PG Series** (except model **PG-05**) has a recalibrator screw. A wide variety of models, options, and accessories are available, including panel-mount models, specialty gauges, and diaphragm seals.



PG Series

### SPECIFICATIONS

<b>Overpressure</b>	125% of FS value	<b>Process Connection</b>	1/8" NPT or 1/4" NPT, depending on model (LM = lower mount, CBM = center back mount, PM = panel mount)
<b>Operating Temperature</b>	-40° to 150°F (-40° to 65°C)	<b>Warranty</b>	1 year
<b>Wetted Parts</b>	Brass socket, phosphor bronze bourdon tube		
<b>Window Material</b>	Acrylic		

### ORDERING INFORMATION

	GAUGE TYPE									
	ECONOMY	1-1/2"	1-1/2"	1-1/2"	2"	QUALITY	2"	2-1/2"	2-1/2"	CONTRACTOR
<b>DIAL SIZE</b>	1-1/2"	1-1/2"	1-1/2"	2"	2"	2"	2-1/2"	2-1/2"	4-1/2"	
<b>CONNECTION</b>	1/8" CBM	1/8" LM	1/8" CBM	1/4" CBM	1/4" LM	1/4" PM	1/4" LM	1/4" PM	1/4" LM	
<b>ACCURACY</b>	3-2-3%	2-1-2%	2-1-2%	2-1-2%	2-1-2%	2-1-2%	2-1-2%	2-1-2%	1%	
<b>CASE MATERIAL</b>	BLACK STEEL	BLACK STEEL	BLACK STEEL	BLACK STEEL	BLACK STEEL	BLACK STEEL	BLACK STEEL	BLACK STEEL	BLACK STEEL	STAINLESS STEEL
<b>PRESSURE RANGE</b>										
30" Hg VAC/kPa	N/A	PG-15-30-0-8L	PG-15-30-0-8C	PG-20-30-0-4C	PG-20-30-0-4L	PG-20-30-0-4P	PG-25-30-0-4L	PG-25-30-0-4P	PG-45-30-0-4L	
30" Hg VAC-30 psig	N/A	N/A	N/A	N/A	N/A	N/A	PG-25-30-30-4L	N/A	PG-45-30-30-4L	
0-15 psig/kPa	N/A	PG-15-0-15-8L	PG-15-0-15-8C	PG-20-0-15-4C	PG-20-0-15-4L	PG-20-0-15-4P	PG-25-0-15-4L	PG-25-0-15-4P	PG-45-0-15-4L	
0-30 psig/kPa	PG-05	PG-15-0-30-8L	PG-15-0-30-8C	PG-20-0-30-4C	PG-20-0-30-4L	PG-20-0-30-4P	PG-25-0-30-4L	PG-25-0-30-4P	PG-45-0-30-4L	
0-60 psig/kPa	N/A	PG-15-0-60-8L	PG-15-0-60-8C	PG-20-0-60-4C	PG-20-0-60-4L	PG-20-0-60-4P	PG-25-0-60-4L	PG-25-0-60-4P	PG-45-0-60-4L	
0-100 psig/kPa	N/A	PG-15-0-100-8L	PG-15-0-100-8C	PG-20-0-100-4C	PG-20-0-100-4L	PG-20-0-100-4P	PG-25-0-100-4L	PG-25-0-100-4P	PG-45-0-100-4L	
0-160 psig/kPa	N/A	PG-15-0-160-8L	PG-15-0-160-8C	PG-20-0-160-4C	PG-20-0-160-4L	PG-20-0-160-4P	PG-25-0-160-4L	PG-25-0-160-4P	PG-45-0-160-4L	
0-200 psig/kPa	N/A	PG-15-0-200-8L	PG-15-0-200-8C	PG-20-0-200-4C	PG-20-0-200-4L	PG-20-0-200-4P	PG-25-0-200-4L	PG-25-0-200-4P	PG-45-0-200-4L	
0-300 psig/kPa	N/A	PG-15-0-300-8L	PG-15-0-300-8C	PG-20-0-300-4C	PG-20-0-300-4L	PG-20-0-300-4P	N/A	N/A	N/A	
0-400 psig/kPa	N/A	PG-15-0-400-8L	PG-15-0-400-8C	PG-20-0-400-4C	PG-20-0-400-4L	PG-20-0-400-4P	N/A	N/A	N/A	
0-600 psig/kPa	N/A	PG-15-0-600-8L	PG-15-0-600-8C	PG-20-0-600-4C	PG-20-0-600-4L	PG-20-0-600-4P	N/A	N/A	N/A	